



SMITH BROTHERS  
*of* B E R N E



SEE YOU AT HOME



your home is a

# BLANK CANVAS

Fill it with everything that reflects YOU. The walls, the floors, the furniture, the personal touches are all opportunities. Will the walls be light and airy or dark and moody? The textiles, should they be bright and bold or cozy neutrals? *You are the artist!*







finding a place to

# CALL HOME

Whether you are searching the urban landscape, the suburban sprawl, or wide open spaces, don't stop until you find a space that feels like home; a place that gives you a true sense of belonging. *You'll know it when you find it.*





Whether it be a cozy apartment, trendy loft, or luxe penthouse, metropolitan living calls the masses. Whatever the space, city living requires efficient floor plans and small furniture. A 9000 midsize sofa is the perfect scale! This piece features deep lounge seating while minimizing its footprint in the room.

# LIVING ALLOFT



With a more open floorplan comes the opportunity for more people! Fill that space with a welcoming sectional for all to enjoy. The 366 style provides seating for all your friends and still leaves plenty of open space in the room.



make your home an

# INVITING SPACE

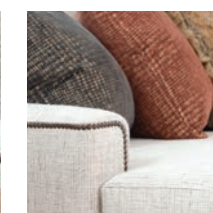




# LAYER TEXTURE

mix it up and keep it layered

Nothing says cozy like soft textiles and cushy seating. Create this vibe by layering in levels of texture. Contrast the smooth floor and soft white walls with the curves of the furniture and pillows. Add finishing touches like textural vases or lamps, chunky throw blankets, and inviting artwork.







# SOFT LUXE 360°

Your home should look amazing from every angle. This cozy feather down filled swivel chair looks great all the way around. The soft curves and substantial scale of the 559 make it a showstopper!







luxurious fabrics to

# SINK INTO

More time at home and more need for a cozy and safe retreat means a resurgence in soft textiles. One way to create that cocoon of comfort is to fill your space with a giant cozy sectional covered in the softest of chenille fabrics. Select feather down seating and lots of toss pillows for a lush sit that wraps you in a hug.





it's all in  
**THE**  
**DETAILS**



Sometimes the small things speak the loudest. Those little finishing touches and attention to detail can truly make a space great. Quality materials, strong design, clean tailoring, subtle curves, nailhead trim details, and ergonomic seating are not to be ignored. It's the difference between good and outstanding!





classic  
**MADE  
CURRENT**



There is something about a room that has a sense of history. A past. A nod to something foundational. The 393 sectional is just the sort of style that carries with it a timeless quality. That element shines through even when surrounded by trendy, modern décor.





# BUILT FOR FAMILIES

## made to last

It takes more than robustly built furniture to fill the needs of your family. Cleanable fabrics, soft but strong cushions, and deep seating are a must. The 253 style checks all the boxes! Try a large sectional in your living space.







# TRADITIONAL

with modern accents

Some looks are never “out,” they just get better with time. Brick walls, white paint, linens, brown leather, warm woods... traditional will serve you well. But who said you can't have a little fun with a classic silhouette? The English arm on the 263 style is equally at home in a grand library as it is in an industrial loft or a lighthearted family room.



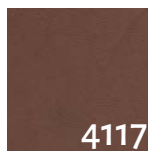
# FABRIC & LEATHER



9211-10 sofa  
Build Your Own 9000 series  
feather down upgrade shown  
*front cover, page 3, back cover*



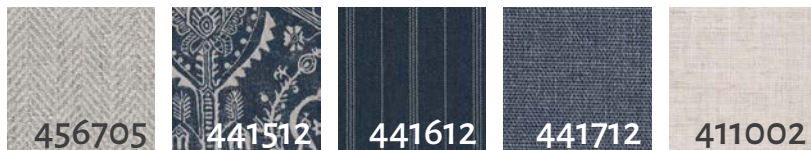
9021-56 swivel glider  
Build Your Own 9000 series  
feather down upgrade shown  
*page 4*



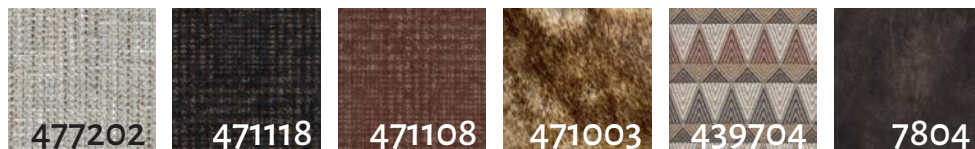
9132-10 sofa from the Build Your Own 9000 series  
feather down upgrade shown  
953-50 cocktail ottomans  
*pages 6-7*



366-21 LAF corner sofa, 366-15 RAF sofa  
*pages 8-9*



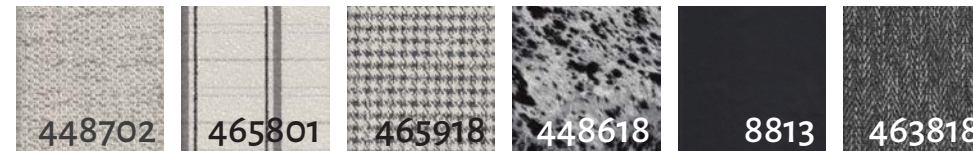
9242-44 LAF chaise, 9202-16 armless sofa, 9242-22 RAF corner sofa  
Build Your Own 9000 series  
880-50 cocktail ottoman  
*pages 10-11*



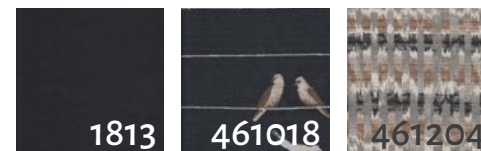
559-56 swivel chair & 559-40 ottoman  
feather down upgrade shown  
*pages 12-15*



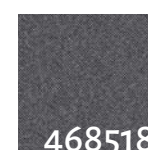
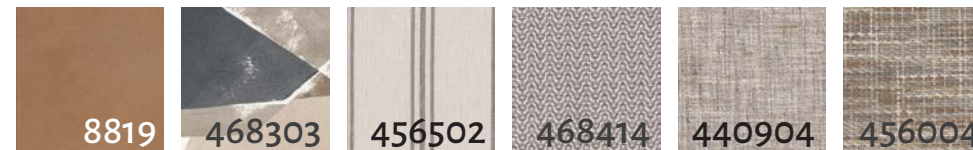
259-14 LAF sofa, 259-32 corner chair, 259-15 RAF sofa, 259-40 ottoman  
feather down upgrade shown  
*pages 14-15*



243-10 sofa  
*pages 16-17*



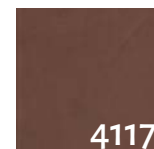
393-21 LAF corner sofa, 393-15 RAF sofa  
393-31 chair 1/2  
1372-50 cocktail ottoman  
*pages 18-19*



253-44 LAF chaise, 253-16 armless sofa, 253-22 RAF corner sofa  
883-50 cocktail ottoman  
*pages 20-21*



263-10 sofa  
*pages 22-23*



*\*Some fabrics and leathers may not be available.  
Please visit [smithbrothersfurniture.com](http://smithbrothersfurniture.com) for more information.*





SMITH BROTHERS  
of B E R N E